



* CHANGING TOP LEVER SPRINGS

REFER TO THE SCHEMATIC BELOW FOR REFERENCES

I RECOMMEND THAT A GUNSMITH PERFORM THE FOLLOWING TASK BUT IF YOU ARE HANDY AND UNDERSTAND THE DYNAMICS OF THIS OPERATION – HAVE AT IT

1. Remove trigger from Receiver.

You will need to remove both Firing Pins by the following instructions and be certain that the LEVER is in its HOME POSITION (6 o'clock).

2. Depending upon your Receiver style, Type 4 hopefully, its type will determine the method in removing the bottom Firing Pin. If your Receiver has Perazzi #136, Top Lever Stop Plate, then proceed, otherwise a different approach is necessary.
3. Drive out the top Firing Pin Retainer Pin (sits above #128 and same size as #128).
4. Remove top Firing Pin AND remove its small recoil spring. Many times this recoil spring will remain in the Receiver. Use a Q-Tip and spin it to remove the coil. You MUST remove this coil (and you will also want to clean this cavity thoroughly).
5. This is the tricky part: Drive out pin #128 for the lower Firing Pin, but ONLY drive it partially out from the LEFT-to-the-RIGHT such that the pin remains IN THE RECEIVER. You want to drive this pin out only as far as necessary to release the Firing Pin, BUT LEAVE in far enough to retain the Stop Plate #136. It is a big pain to remove the Stop Plate completely and then reinstall parts 134, 135, and 137.
6. Turn Receiver up-side-down.
7. With a small drift punch (~1/8" diameter), you will insert it in the center hole located on the Action Block, #104. This hole is in the block and specifically designed for the removal of the Top Lever.
8. CAREFULLY tap the punch; forcing the Top Lever DOWN (you have the Receiver up-side-down). When you drive the Top Lever down you will

S&W Supply Company, Inc.

5308 Timberline Trail • Rapid City SD 57702 • ☎ (605) 341-4412 Phone/Fax/Answering Machine

✉ whiz@swsupply.com

be releasing the Top Lever Coil Spring #121 and what looks like a slotted head screw #111, the Top Lever Locking Piece.

NOTE: This #111 is the actual part the holds the Top Lever in place and is what operates the lever to make it close. The slot is designed for alignment and **SHOUL NOT BE TURNED** like a screw to loosen.

IMPORTANT: As you tap the punch and in the process of forcing the Top Lever out of the Receiver, parts #111 and #121 coil spring and locking piece will want to launch themselves. I recommend that you cover the area with a towel to prevent the loss of these items.

9. Examine the coil spring #121... There are **THREE STYLES** of these available. In most cases the coil spring will or should measure as follows”

OD: 0.175”

ID: 0.090”

WIRE SIZE: 0.042”

LENGTH: 0.990”

There is a larger spring available, should yours prove to be larger than the above dimensions.

10. Clean this pocket entirely.

NOTE: Look at the Top Lever and notice the full length groove in it and understand how this groove relates to how the #111 “screw driver head looking” Locking Piece fits into this groove. You will want to orientate #111 into position so that if you look down into the Top Lever cavity in the Receiver, you can see its correct position in order to install the Lever and #111.

REASSEMBLY

1. You will insert the new coil spring #121 and Locking Piece #111 into the rear of the Receiver. I recommend you place the Receiver in a soft jawed vice to do this.
2. You should use a gunsmith screw driver to hold piece #111 such that its groove is vertical. **IT MUST BE TURNED** such that its groove is **TOWARDS** the Top Lever cavity. You will press in on this piece just enough to be able to tap the Top Lever back into its standard position.

NOTE: MAKE SURE THE LOCKING BLOCK IS ALL THE WAY FORWARD.

3. You will continue to press #111 in until the Top Lever easily returns to its normal position.

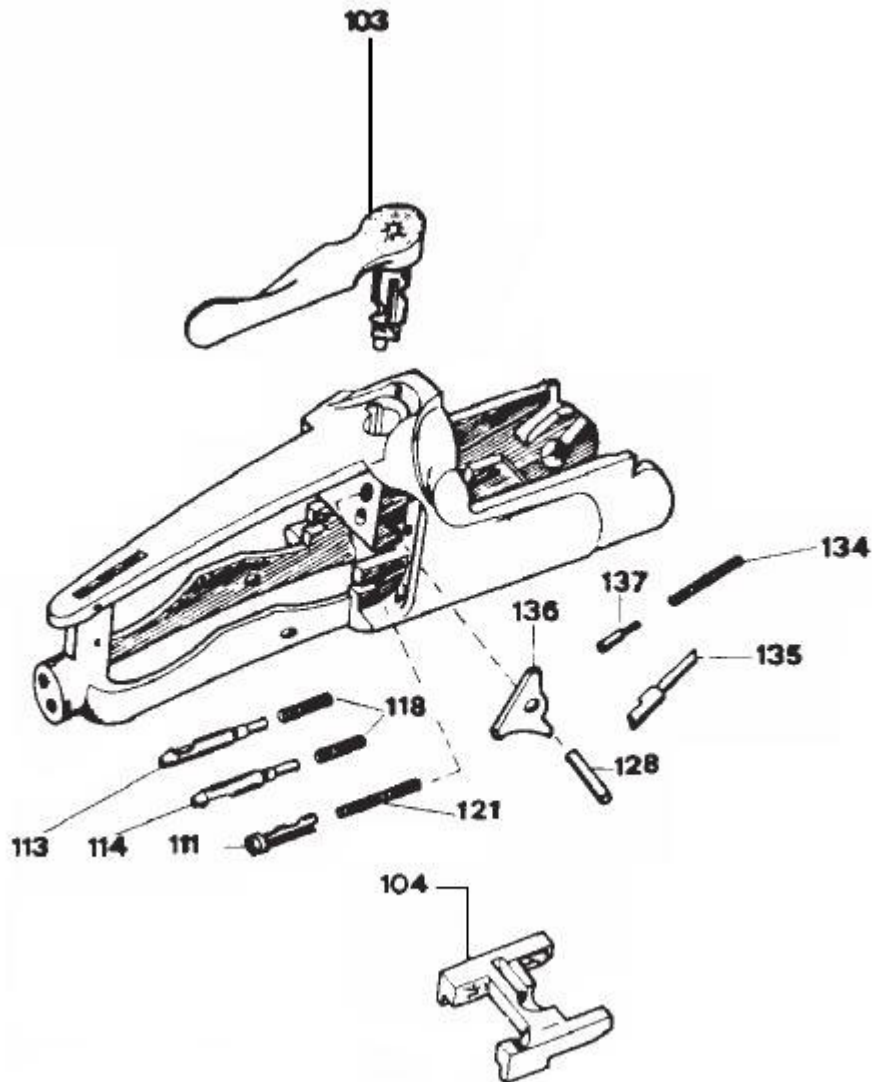
S&W Supply Company, Inc.

5308 Timberline Trail • Rapid City SD 57702 • ☎ (605) 341-4412 Phone/Fax/Answering Machine

✉ whiz@swsupply.com

4. Once the Top Lever is installed correctly reinsert the Firing Pin coils, lightly oiled, and Firing Pins in and orientate them to permit the insertion of their respective pins #128.

RECOMMENDATIONS: Thoroughly clean all parts in lacquer thinner and oil prior to reinsertion. I use Rem Oil.



S&W Supply Company, Inc.

5308 Timberline Trail • Rapid City SD 57702 • ☎ (605) 341-4412 Phone/Fax/Answering Machine

✉ whiz@swsupply.com